



PROMOTING EFFECTIVE HEALTH  
PARTNERSHIPS WORLDWIDE

# Why spend abroad?

Kwalombota M. Kwalombota

International Health Links Centre,  
Liverpool

[www.ihlc.org.uk](http://www.ihlc.org.uk)

# Why shouldn't the government spend abroad?

We have problems here too

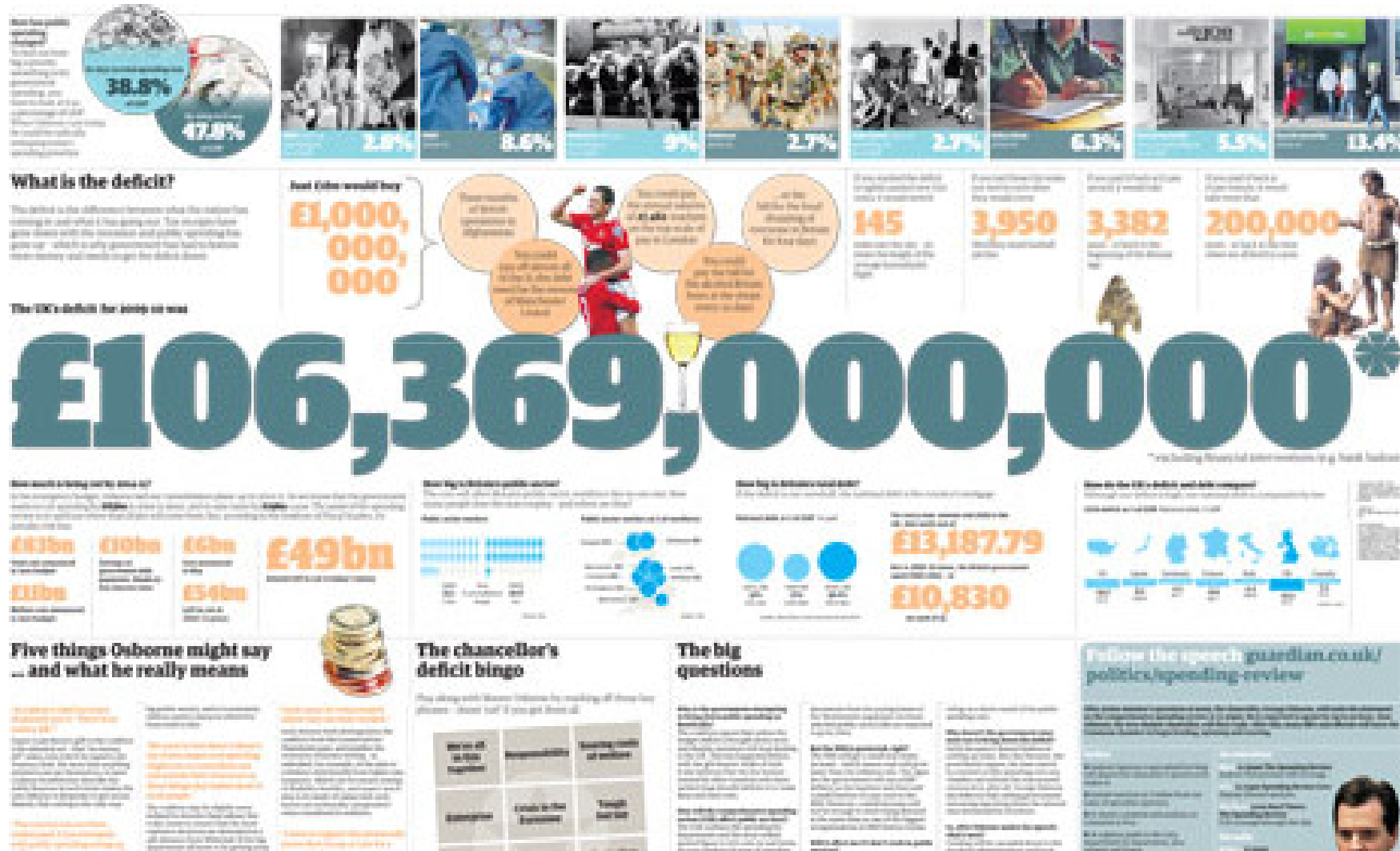
Spend it on our unemployed and youth!!

RECESSION!!!  
!!!!

We are in a recession!!

Reduce health inequalities and deprivation here first!

# The big figures...



# Cuts, cuts, cuts



## Teenage tan club Spelbound are smiling - but is Simon Cowell?

This section Page 2



## David Conn The true state of the Glazers' business empire

Sport Page 1



Class  
Monday 15 October  
Published  
in London and  
Manchester  
guardian.co.uk

# the guardian

## Cameron: cuts 'will change British life'

### Canadian-style star chamber to enforce savage spending decisions

Michael White and Terry Macaluso

David Cameron will soon enjoy the British "holocaust of 2010" will be the legend for years to come as public spending is slashed. Thanks to it, they will have to begin to think of their children.

But if you are a member of a ruling class, the plan is not to start the British public's financial crisis with a general election but to start it from above.

Cameron is to say, "We are doing what every government should do. The British are not used to a heavy budget deficit in our country. It is the culture of European countries." In other words, "Please don't do it."

In Canada, George Osborne, the chief adviser to the prime minister, says that the British are not used to a "heavy" budget deficit. In other words, "Please don't do it." In other words, "Please don't do it." In other words, "Please don't do it."

The new budget plan will be the opportunity a Canadian-style "star chamber" in which ministers will be asked to justify their budgets to a group of ministers and the prime minister.

The British are not used to a heavy

budget deficit in our country. It is the culture of European countries.

The decision to turn to Canada for inspiration in reducing Britain's budget deficit is the best advice the British government has received in recent months. In the public domain, Osborne is to be the study of the Canadian-style spending cuts, and the British public will be asked to justify their budgets to a group of ministers and the prime minister.

The prime minister will have to be given a "holocaust of 2010" in the public domain. Osborne is to be the study of the Canadian-style spending cuts, and the British public will be asked to justify their budgets to a group of ministers and the prime minister.

Osborne will follow Cameron's lead by cutting a "holocaust of 2010" in the public domain. Osborne is to be the study of the Canadian-style spending cuts, and the British public will be asked to justify their budgets to a group of ministers and the prime minister.

## Tragedy only increases our love West Cumbria mourns its dead



Kelso Fidd  
Barnsley

When the first news of what happened in West Cumbria was widely reported, it was a shock to the system. It was a shock to the system.

At the time, the news of the tragedy was a shock to the system. It was a shock to the system.

Tragedy only increases our love. West Cumbria mourns its dead.

Tragedy only increases our love. West Cumbria mourns its dead.

Tragedy only increases our love. West Cumbria mourns its dead.

Tragedy only increases our love. West Cumbria mourns its dead.

Tragedy only increases our love. West Cumbria mourns its dead.

# Ring fenced international development



**Table 1: Departmental Programme and Administration Budgets (Resource DEL excluding depreciation<sup>1)</sup>)**

|  | £ billion             |              |              |              |              | Per cent               |
|--|-----------------------|--------------|--------------|--------------|--------------|------------------------|
|  | Baseline <sup>2</sup> | Plans        |              |              |              | Cumulative real growth |
|  | 2010-11               | 2011-12      | 2012-13      | 2013-14      | 2014-15      |                        |
| <b>Departmental Programme and Administration Budgets</b> |                       |              |              |              |              |                        |
| Education <sup>3</sup>                                   | 50.8                  | 51.2         | 52.1         | 52.9         | 53.9         | <b>-3.4</b>            |
| NHS (Health)   | 98.7                  | 101.5        | 104.0        | 106.9        | 109.8        | <b>1.3</b>             |
| Transport  | 5.1                   | 5.3          | 5.0          | 5.0          | 4.4          | <b>-21</b>             |
| CLG Communities <sup>4</sup>                             | 2.2                   | 2.0          | 1.7          | 1.6          | 1.2          | <b>-51</b>             |
| CLG Local Government <sup>5</sup>                        | 28.5                  | 26.1         | 24.4         | 24.2         | 22.9         | <b>-27</b>             |
| Business, Innovation and Skills                          | 16.7                  | 16.5         | 15.6         | 14.7         | 13.7         | <b>-25</b>             |
| Home Office <sup>6</sup>                                 | 9.3                   | 8.9          | 8.5          | 8.1          | 7.8          | <b>-23</b>             |
| Justice  | 8.3                   | 8.1          | 7.7          | 7.4          | 7.0          | <b>-23</b>             |
| Law Officers' Departments                                | 0.7                   | 0.6          | 0.6          | 0.6          | 0.6          | <b>-24</b>             |
| Defence  | 24.3                  | 24.9         | 25.2         | 24.9         | 24.7         | <b>-7.5</b>            |
| Foreign and Commonwealth Office                          | 1.4                   | 1.5          | 1.5          | 1.4          | 1.2          | <b>-24</b>             |
| International Development                                | 6.3                   | 6.7          | 7.2          | 9.4          | 9.4          | <b>37</b>              |
| Energy and Climate Change                                | 1.2                   | 1.5          | 1.4          | 1.3          | 1.0          | <b>-18</b>             |
| Environment, Food and Rural Affairs                      | 2.3                   | 2.2          | 2.1          | 2.0          | 1.8          | <b>-29</b>             |
| Culture, Media and Sport <sup>7</sup>                    | 1.4                   | 1.4          | 1.3          | 1.2          | 1.1          | <b>-24</b>             |
| Olympics <sup>8</sup>                                    | -                     | 0.1          | 0.6          | 0.0          | -            | -                      |
| Work and Pensions  | 6.8                   | 7.6          | 7.4          | 7.4          | 7.6          | <b>2.3</b>             |
| Scotland <sup>9</sup>                                    | 24.8                  | 24.8         | 25.1         | 25.3         | 25.4         | <b>-6.8</b>            |
| Wales <sup>9</sup>                                       | 13.3                  | 13.3         | 13.3         | 13.5         | 13.5         | <b>-7.5</b>            |
| Northern Ireland <sup>9</sup>                            | 9.3                   | 9.4          | 9.4          | 9.5          | 9.5          | <b>-6.9</b>            |
| HM Revenue and Customs                                   | 3.5                   | 3.5          | 3.4          | 3.4          | 3.2          | <b>-15</b>             |
| HM Treasury  | 0.2                   | 0.2          | 0.2          | 0.2          | 0.1          | <b>-33</b>             |
| Cabinet Office <sup>10</sup>                             | 0.3                   | 0.4          | 0.3          | 0.2          | 0.4          | <b>28</b>              |
| Single Intelligence Account <sup>11</sup>                | 1.7                   | 1.7          | 1.7          | 1.7          | 1.8          | <b>-7.3</b>            |
| Small and Independent Bodies <sup>12</sup>               | 1.8                   | 1.8          | 1.6          | 1.5          | 1.4          | <b>-27</b>             |
| Reserve  | 2.0                   | 2.3          | 2.4          | 2.5          | 2.5          | -                      |
| Special Reserve  | 3.4                   | 3.2          | 3.1          | 3.0          | 2.8          | -                      |
| Green Investment Bank                                    | -                     | -            | -            | 1.0          | -            | -                      |
| <b>Total</b>   | <b>326.6</b>          | <b>326.7</b> | <b>326.9</b> | <b>330.9</b> | <b>328.9</b> | <b>-8.3</b>            |

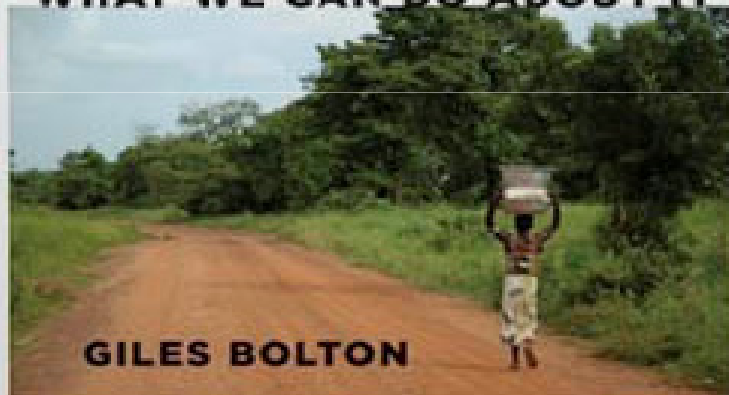
# So why continue with international development?



PROMOTING EFFECTIVE HEALTH  
PARTNERSHIPS WORLDWIDE

# AFRICA DOESN'T MATTER

HOW THE WEST HAS  
FAILED THE POOREST  
CONTINENT AND  
WHAT WE CAN DO ABOUT IT



GILES BOLTON

DAMBISA MOYO

# DEAD AID

WHY AID IS NOT WORKING AND HOW  
THERE IS ANOTHER WAY FOR AFRICA

With a Foreword by Niall Ferguson

# “Mutual benefits”



PROMOTING EFFECTIVE HEALTH  
PARTNERSHIPS WORLDWIDE

# Economic and strategic reasons

- Emerging markets
- Human health capital
- Development aid creates employment
- Strategic: shifting power bases



# Security

- Tier 1 threats include: acts of international terrorism, hostile attacks on UK cyberspace, major natural hazards or pandemics
- Significant reductions through international development



# Health

- “Tropical” diseases are not so tropical anymore
- Rise in TB and other communicable diseases
- SARs
- All coming on UK shores



# Benefits to individuals, institutions and organisations

- Various skills attuned
- Confidence, leadership skills increased
- Cultural awareness
- Enhanced reputation of organisations



# Evidence

- Effectiveness of health links vs. other types of aid
- Impact assessments
- The NHS experience of health links
- Host government perceptions



# Health is global!

 HM Government

## Health is Global

A UK Government Strategy 2008–13





PROMOTING EFFECTIVE HEALTH  
PARTNERSHIPS WORLDWIDE

[www.ihlc.org.uk](http://www.ihlc.org.uk)